

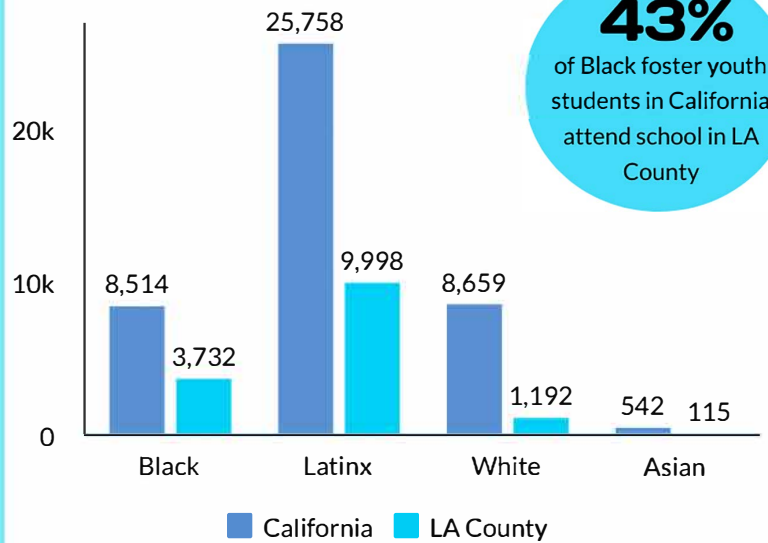
# The Disenfranchisement of Black Foster Youth

## An Analysis of Los Angeles County Public School Data

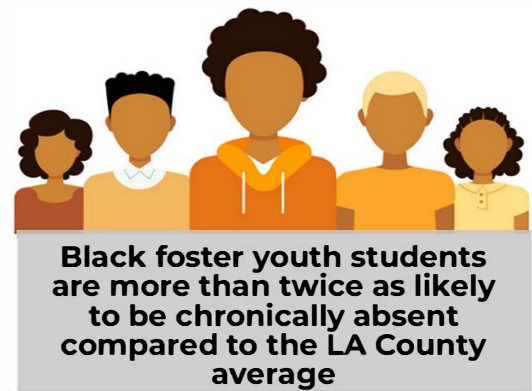
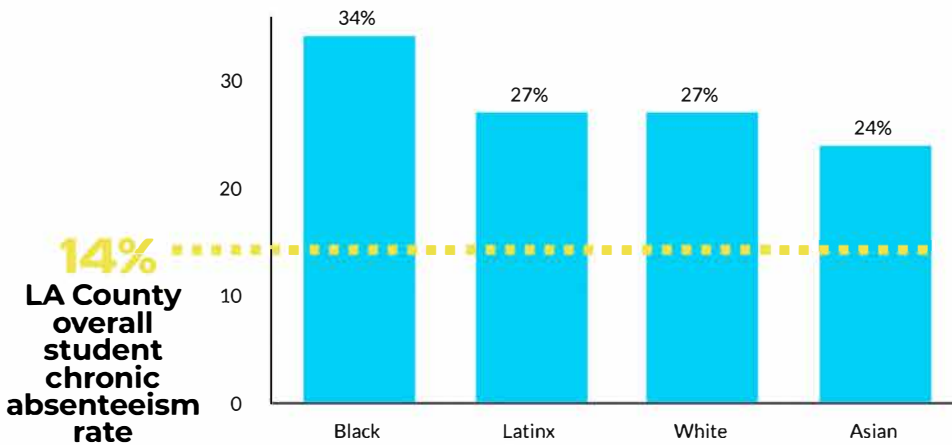
AUTHORS: BRIANNA M. HARVEY, MSW, KENYON LEE WHITMAN, MA, TYRONE HOWARD, PHD, AND THE BLACK MALE INSTITUTE LAB

California public schools educate over 46,000 K-12 students in foster care. About a third of them attend Los Angeles County public schools. An analysis of 2018-2019 data from the California Department of Education shows that **43% of all Black foster youth students in California are attending public schools in LA County.** Black foster youth students disproportionately experience punitive discipline and are suspended at a rate of 17% in comparison to the overall LA County rate of 2%. Black foster youth students also have the highest representation in special education at 37% as well as the largest chronic absenteeism rate at 34%. Only 51% of Black foster youth students graduated on time during the 2018-2019 school year. Black foster youth students struggled with college enrollment in 2017-2018, with zero percent enrolling into a UC and only 6% enrolling in a CSU upon high school completion. Black foster youth students attending school in LA County are being disenfranchised in their educational experiences.

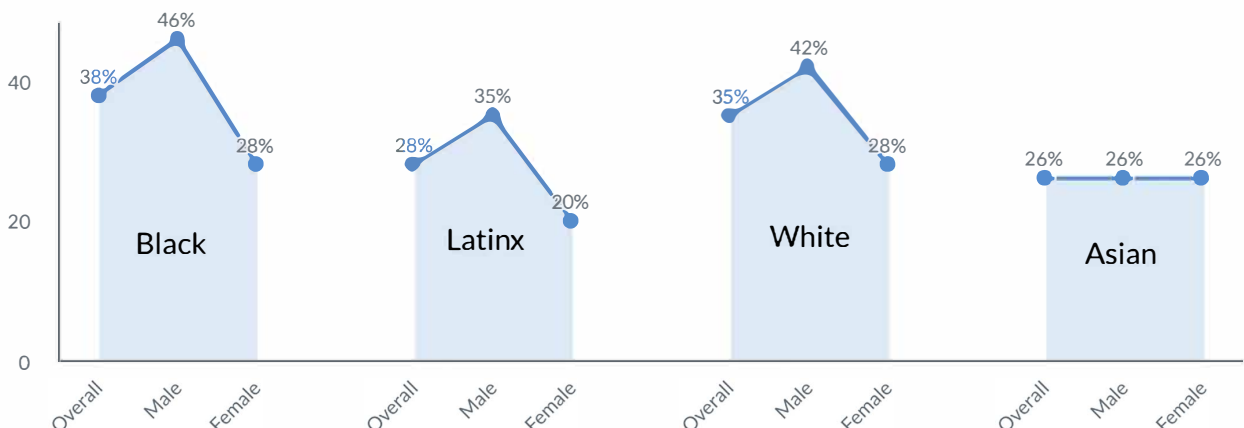
### K-12 Foster Youth Student Enrollment, 2018-19



### LA County Foster Youth Student Chronic Absenteeism Rate, 2018-19



### K-12 Foster Youth Student Special Education Placement, 2018-19

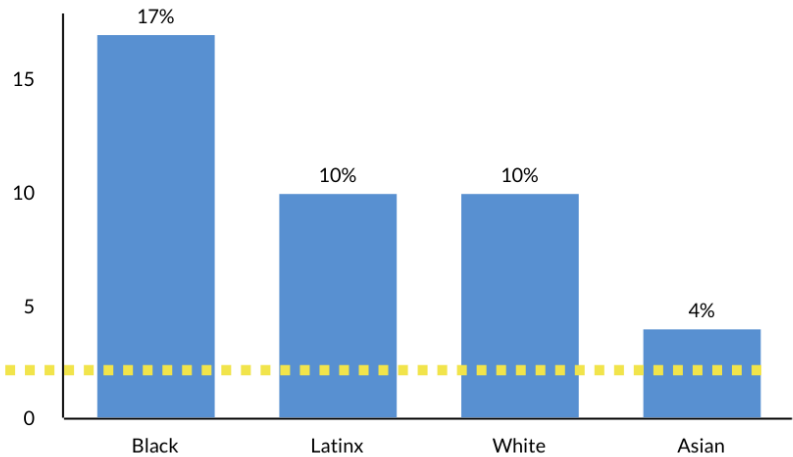


## LA County Foster Youth Student Suspension Rates, 2018-19



**1 out of 6** Black foster youth students have been suspended in LA County Public Schools

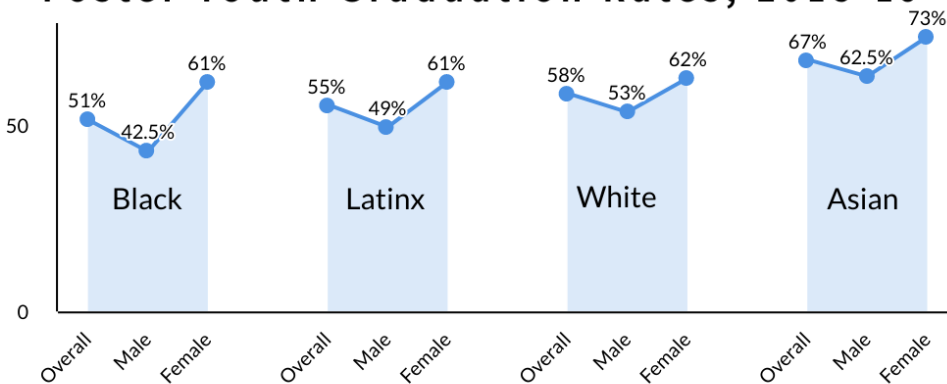
**2%**  
LA County overall student suspension rate



## Students in LA County Juvenile Halls, 2018-19

**35%** of Black Students  
**28%** of Foster Youth Students

## LA County Four-Year Adjusted Cohort<sup>1</sup> Foster Youth Graduation Rates, 2018-19

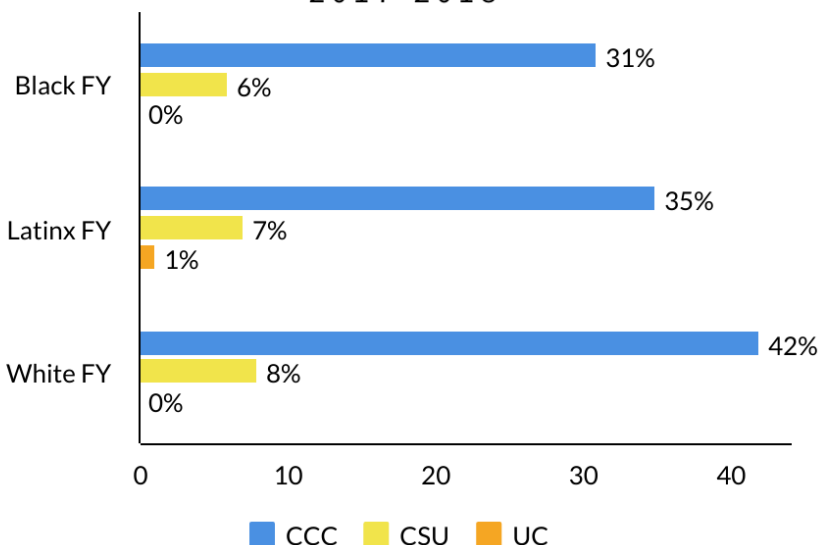


**42.5%**

of Black male foster youth graduate on time that attend an LA County public school

**\*Lowest across all cohorts**

## LA County Foster Youth Student College Enrollment, 2017-2018



### Recommended Citation:

Harvey, Brianna M., Whitman, Kenyon Lee, & Howard, Tyrone (2020). "The Disenfranchisement of Black Foster Youth: An Analysis of Los Angeles County Public School Data." Los Angeles, CA. UCLA Black Male Institute.

### Methodology:

Data was retrieved and analyzed from California Department of Education's Data Quest on October 12th, 2020. The Dataset uses the identifier "Foster youth", as defined in EC Section 42238.01 (b) and includes students who are the subject of a 300 WIC petition, whether or not they have been removed from home, as well as students removed from home and that are the subject of a 602 WIC petition. The definition does not include students removed from home as part of a voluntary placement agreement

1. The four-year cohort is based on the number of students who enter grade 9 for the first time adjusted by adding into the cohort any student who transfers in later during grade 9 or during the next three years and subtracting any student from the cohort who transfers out, emigrates to another country, transfers to a prison or juvenile facility, or dies during that same period

### For more information contact:

Brianna M. Harvey (b.harvey@ucla.edu)  
Kenyon Lee Whitman (kenyon.whitman@ucr.edu)